



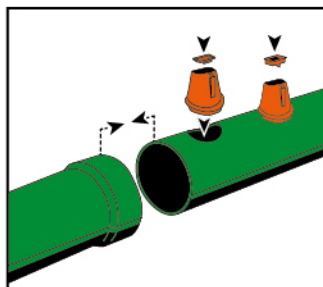
# MIK Grüne Rinne

The „Grüne Rinne“ drain pipe offers a flexible and easy to assemble system for drainage of floors, dungheaps, flat silos and composting installations. The pipe can be equipped with three different types of spouts.

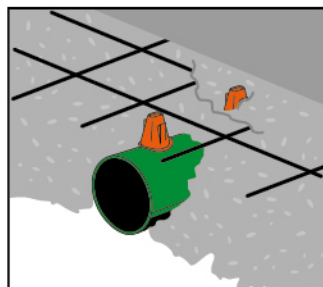
1. The orange spouts main characteristics is a special opening funnel avoiding quick clogging while removing manure. They come with a spring lock to be removed after concrete work.
2. The yellow spouts with round 1,5 cm (9/16") size openings act as conventional drainage. The spouts are enclosed with concrete and subsequently opened.
3. With a height of 71 mm, the blue spouts can be used for deeper embedding in concrete.
4. With a height of 71 mm, the red spouts can be used for deeper embedding in concrete. Only for the Grüne Rinne with 160 mm Ø.



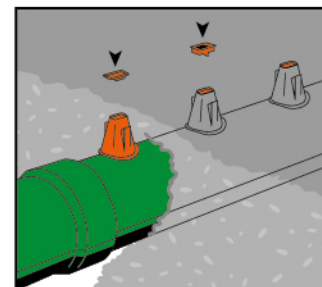
**Grüne Rinne**  
the clever drainage expert



Insert spouts and close with flap lid.



Align top of spouts with concrete flooring.



Push in flap lids to open spouts.

## Benefits

- high quality design
- cost saving alternative to PVC piping
- versatile usage
- easy installation

## Technical data

|                  | orange spouts | yellow spouts | blue spouts | red Tülle |
|------------------|---------------|---------------|-------------|-----------|
| Item no.         | 00212         | 00213         | 00214       | 00218     |
| Spout height mm  | 51            | 46            | 71          | 71        |
| Pipe-Diameter mm | 125           |               |             | 160       |

Your MIK dealer:

**MIK INTERNATIONAL GmbH & Co. KG**

**Distribution center:**

Masselbachstr. 22 · 56235 Ransbach-Baumbach

Fon +49 2922 885 600 · Fax +49 2922 885 670



**info@mik-online.de • www.mik-online.com**