



STEPPER and TRAPPER sheep panels



MIK plastic panels for sheep and goats support healthy and economical animal keeping. The benefits:

- knobbed surface generating unique slide prevention and safe grip
- excellent self-cleaning due to 14 mm wide slits
- stability, durability and resistance
- allows moving safely and lying comfortably
- dry and temperature-neutral for healthier animals
- reduction of bedding, storage costs and labour input

STEPPER

The Stepper panel was especially developed for sheep and goat keeping. Its new kind of surface structure provides the very best traction and stability.



knobbed structure for perfect grip

Technical data

	STEPPER	STEPPER XL	TRAPPER	TRAPPER XL
Item no.	00312	00322	00313	00323
Measurements mm	800 x 400	800 x 600	800 x 400	800 x 600
Slit width	14 mm			
Share of slits	35 %			
Animal weight	200 kg	120 kg	200 kg	200 kg



Accessories

DUO

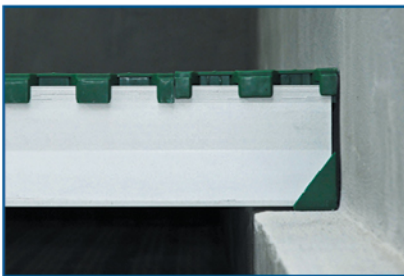
The DUO support beam system is the basis for the entire panel system. The beams made of composite fiberglass (GRP) ensure a stable and durable panel support. Even under difficult construction conditions, our wide accessory assortment guarantees easy and fast assembling.

Benefits

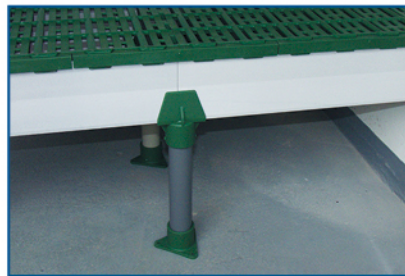
- high bearing load and stability due to delta-profile
- special DUO edge profile for additional interlocking with panel
- support leg system for wider spanning
- acid and alkali resistant
- first class self cleaning
- no corrosion



DUO supporting leg set
PVC piping (green) up to 50 cm
GRP piping up to 100 cm



DUO with Protect on concrete lintel



DUO on support legs

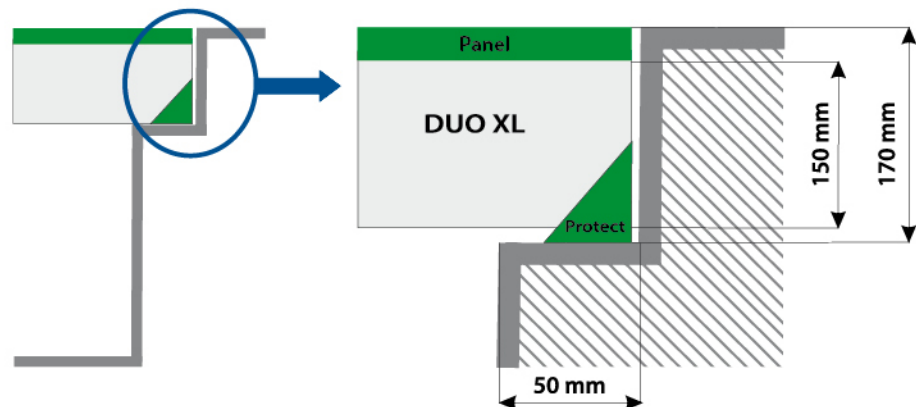


Stainless steel wall clamp
hygienic assembling solution

Installation example

Installation height

Panel = 15 mm
DUO XL = 150 mm
Protect = 5 mm
Total = 170 mm



Your MIK dealer:

MIK INTERNATIONAL GmbH & Co. KG
Distribution center:
Masselbachstr. 22 · 56235 Ransbach-Baumbach
Fon +49 2922 885 600 · Fax +49 2922 885 670

MIK[®]
INTERNATIONAL

info@mik-online.de • www.mik-online.com